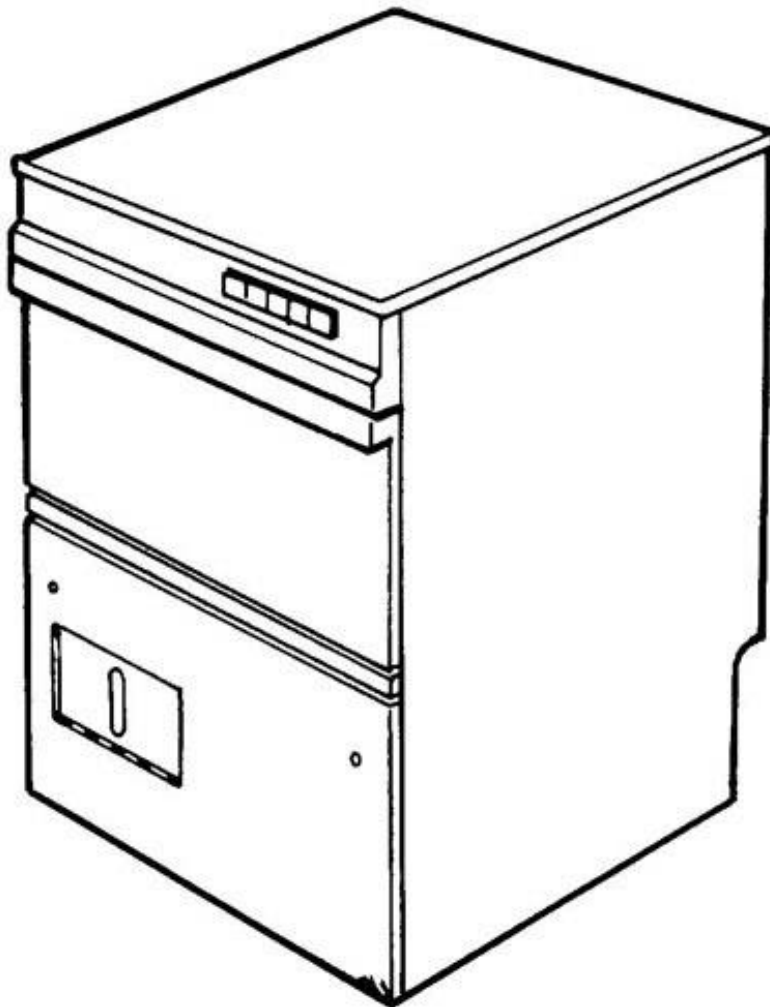


winterhalter

Spare Parts List GS 10/2

Revised 02/08

Part no. 89001326



Summary

Water drain and tank heating	Page 1 and 2
Water supply	Page 3 and 4
Wash system I	Page 5 and 6
Wash system II	Page 7 and 8
Rinsing I	Page 9 and 10
Rinsing II	Page 11 and 12
Door	Page 13 and 14
Panel	Page 15 and 16
Electrical parts I	Page 17 and 18
Electrical parts II	Page 19 and 20

Parts that have the note " Part made to order only!", are not in stock. This parts are made specially for your order and have a delivery time. They are not returnable.

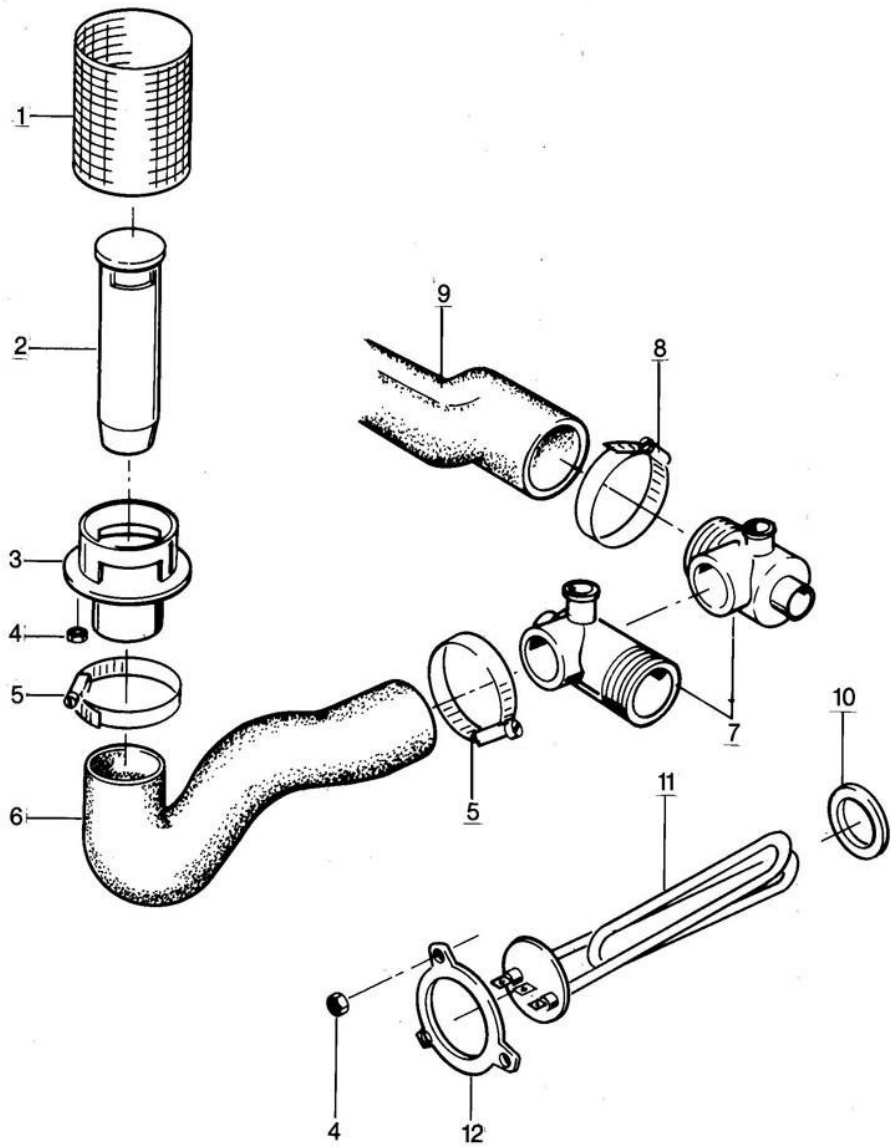
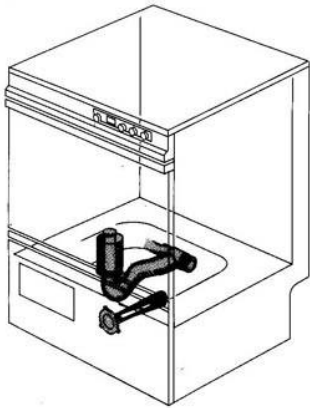
Racks and accessories see separate list.

GS 10/2

Wasserablauf und Tankheizung

Water drain and tank heating

Ecoulement d'eau et chauffage de la cuve

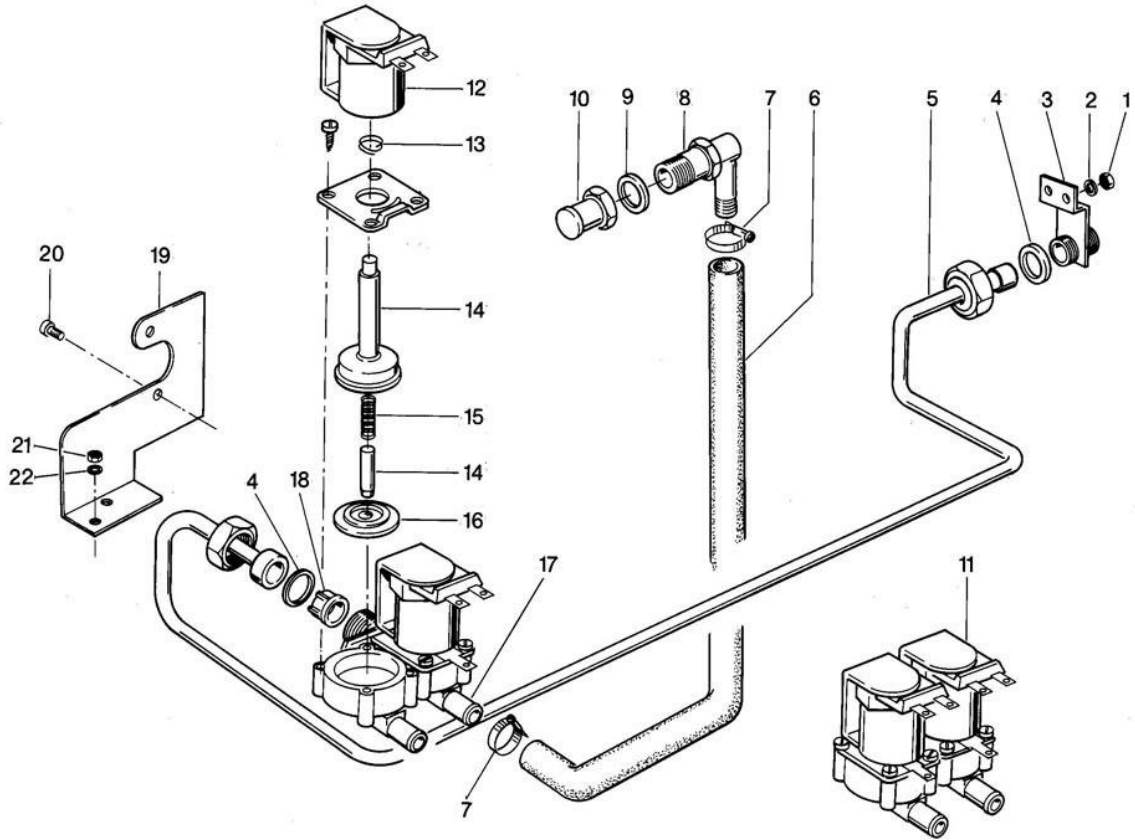
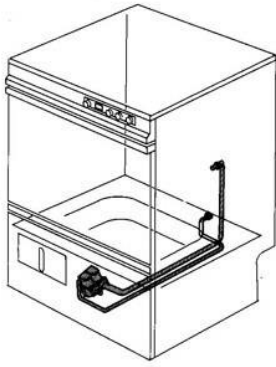


GS 10/2

Wasserzulauf und Wassereinlauf

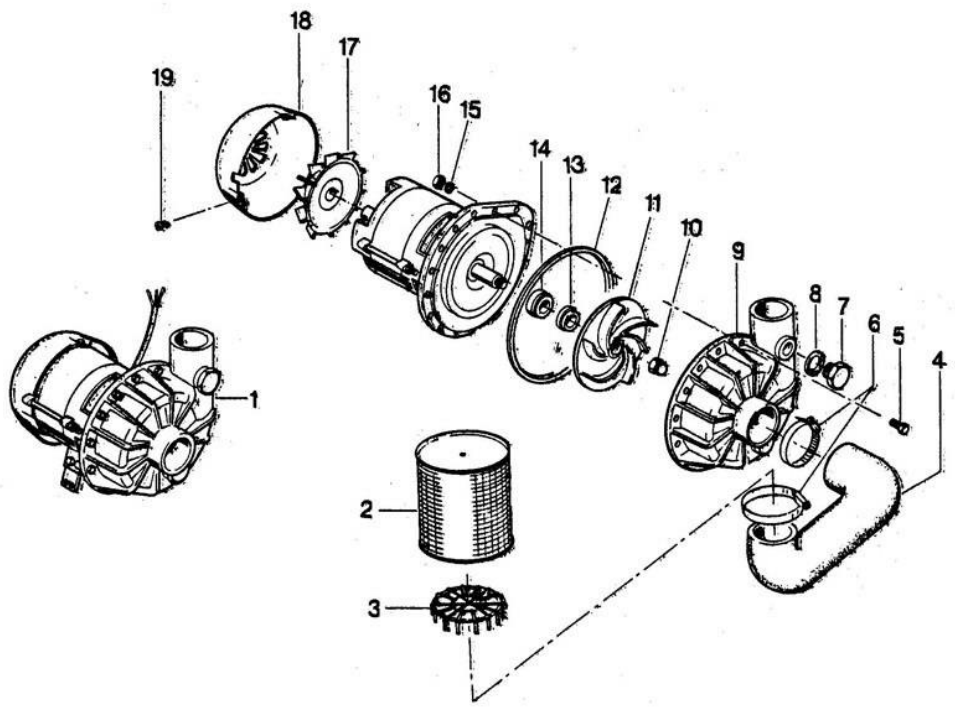
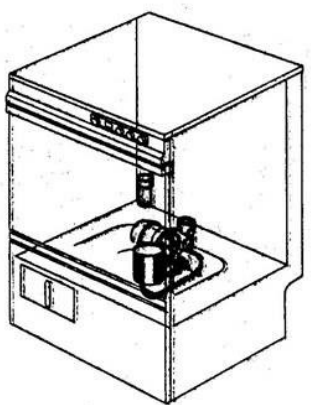
Water feed and water inlet

Alimentation d'eau et arrivée de l'eau



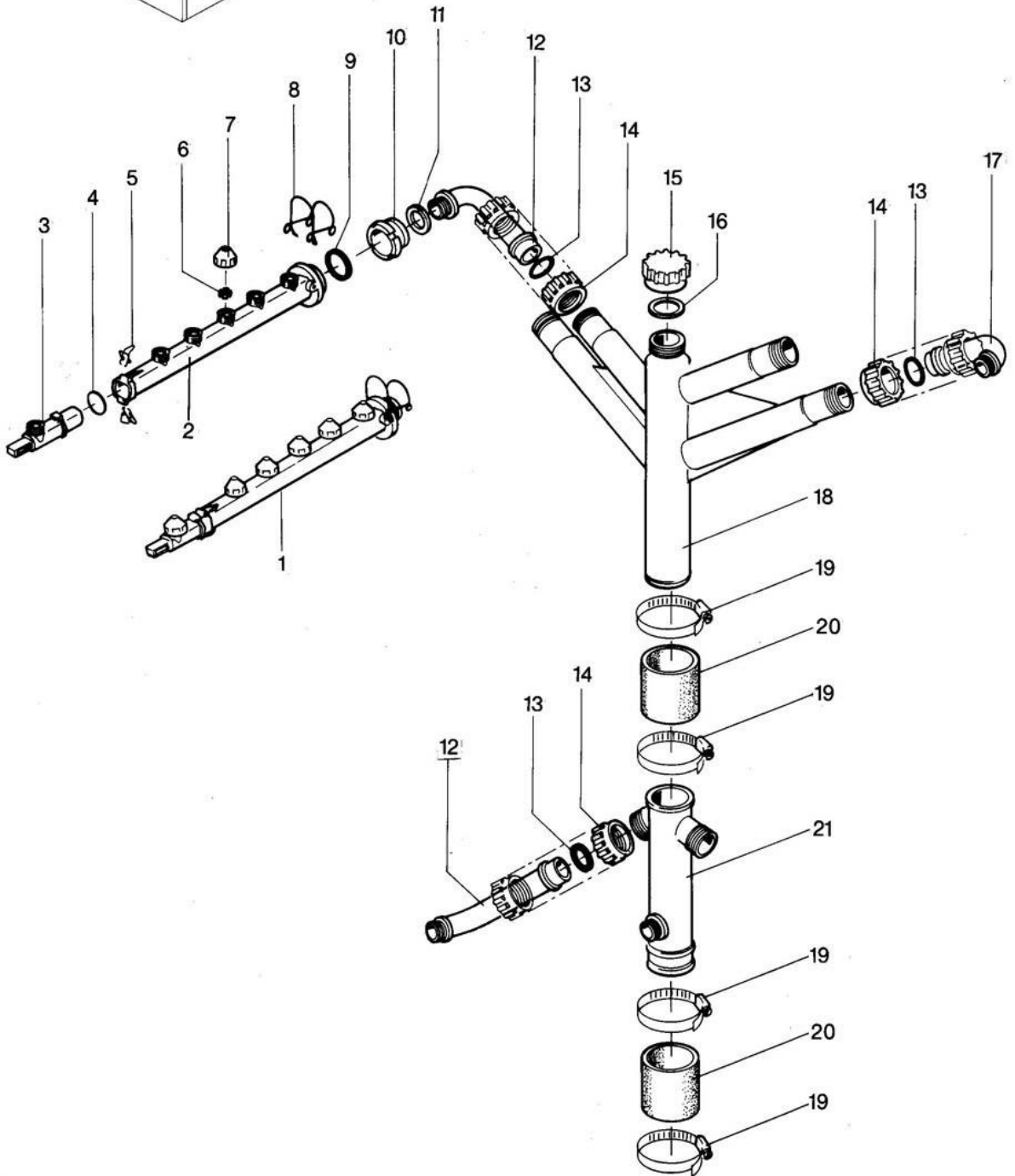
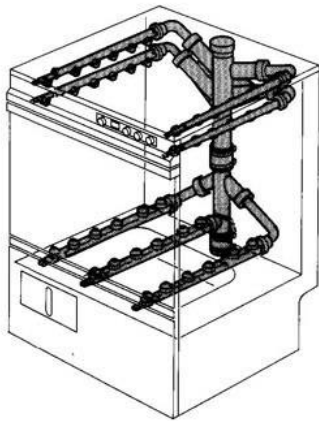
GS 10/2

Waschsystem I
Wash system I
Système de lavage I



GS 10/2

Waschsystem II Wash system II Système de lavage II

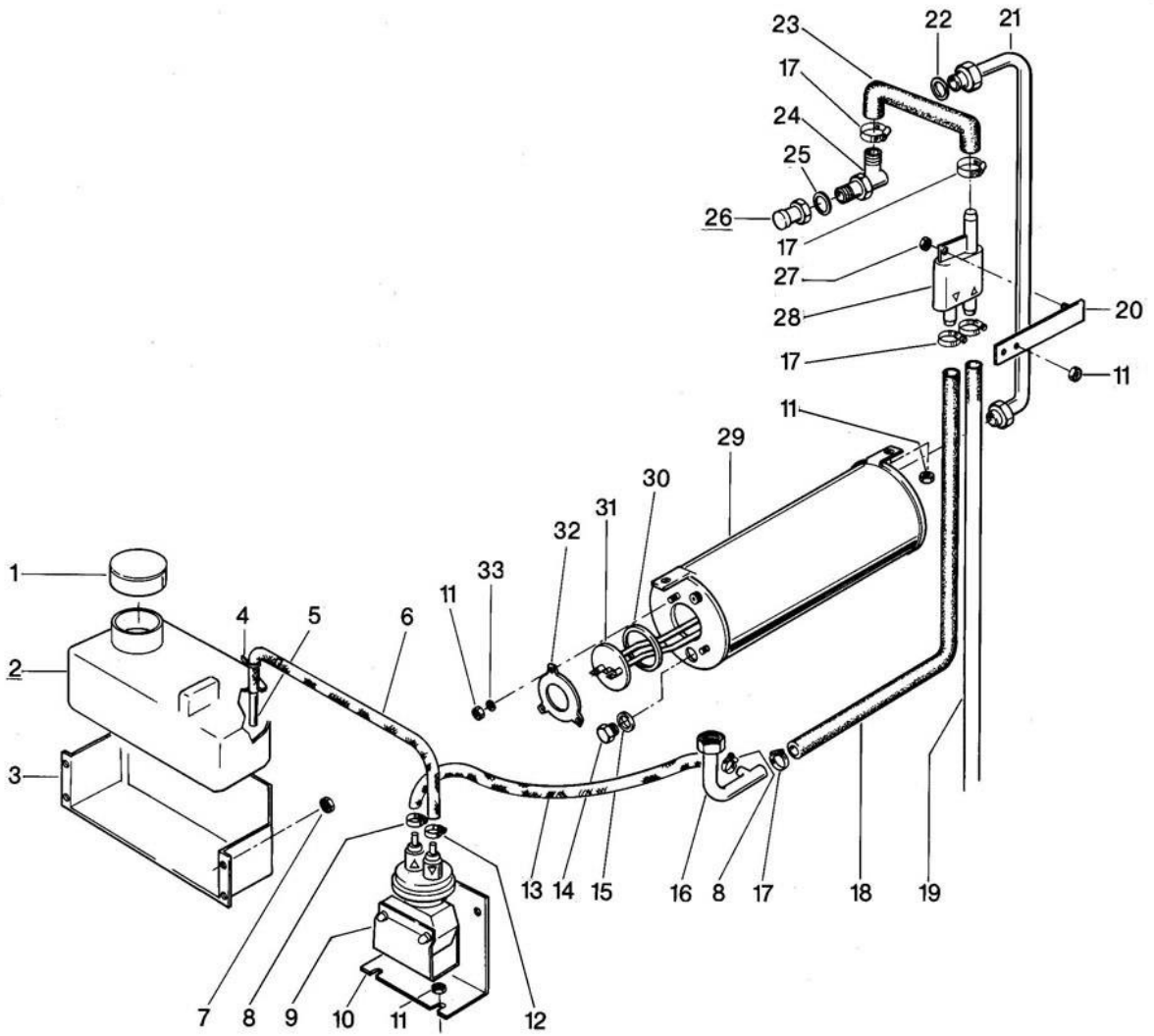
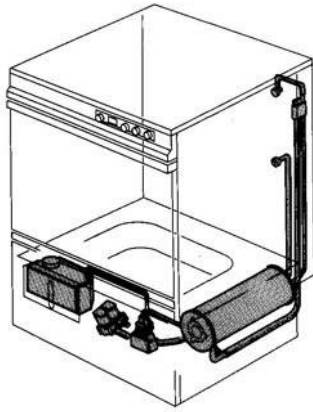


GS 10/2
Wash system II

Pos.	Designation	Part no.	Notes
1	Wash arm cpl.	55 07 057	with jets + end piece
2	Wash arm		Only completely available, pos. 1
3	End piece 90°	35 01 192	
4	O-ring ø 18 x 1,5	27 07 039	
5	End piece locking	28 04 041	
6	Jet swirl	60002465	Consists of pos. 6 and 7
7	Jet cap		
8	Spring locking	28 04 042	
9	O-ring ø 27 x 4	27 07 016	
10	Ring nut G ¾" x 32	35 01 006	
11	Seal ø 33 x ø 26 x 2,5	27 01 003	
12	Manifold elbow long	35 01 149	
13	O-ring ø 24 x 3	27 07 066	
14	Coupling nut	35 01 004	
15	Covering cap	35 01 158	
16	Seal ø 38 x ø 30 x 2,0	27 02 001	
17	Manifold elbow short	35 01 150	
18	Manifold top part	35 01 154	
19	Hose clip ø 47 x ø 67	28 02 115	
20	Pump hose ø 50 x 4,5 x 70 lg.	4002012	Per meter
21	Manifold bottom part	35 01 018	

GS 10/2

Nachspülung I Rinsing I Rinçage I

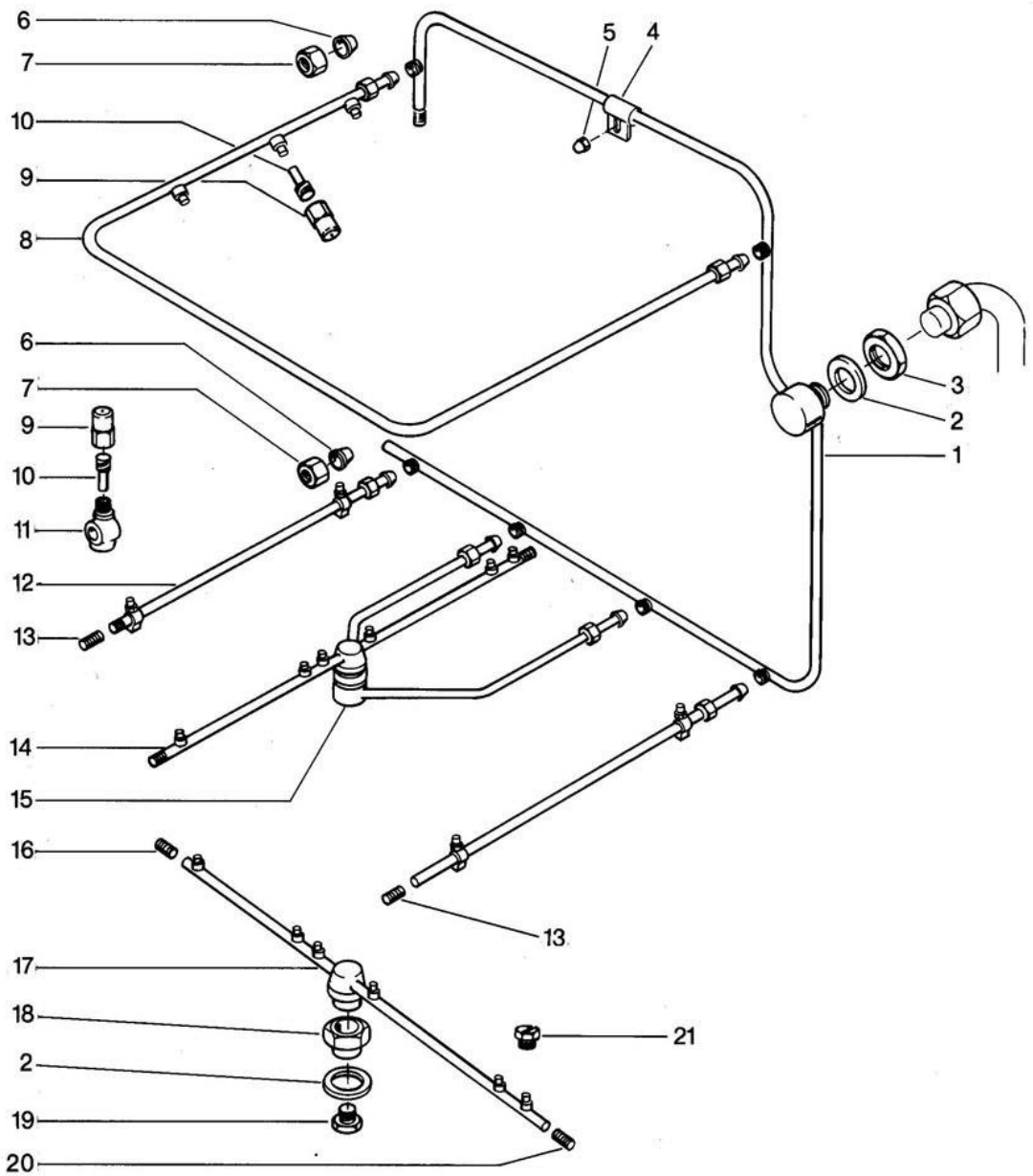
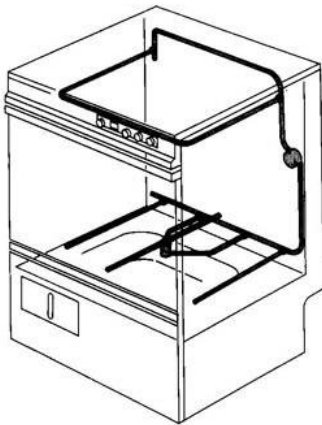


GS 10/2 Rinsing I

Pos.	Designation	Part no.	Notes
1	Locking cap	60002216	
2	Detergent container	35 02 022	
3	Container bag	35 01 541	
4	Wire hose clip	2802348	
5	Suction pipe	55 25 063	
6	Hose \varnothing 9 x \varnothing 6 x 450	40 01 024	per meter
7	Hexagon nut M 4	21 05 300	self-securing
8	Wire hose clip	2802348	
9	Dispenser ELT 20	5528278	
10	Dispenser support	60000314	
11	Hexagon nut M 5	21 01 303	
12	Wire hose clip	2802348	
13	Hose \varnothing 5 x 3 x 335	40 01 024	per meter
14	Hexagon screw M 10 x 14	20 01 352	
15	Seal \varnothing 18 x \varnothing 10 x 1,5	27 03 003	
16	Boiler elbow	55 09 055	with DVGW since 1/88
n.p.	Boiler elbow	55 09 043	without DVGW until 12/87
17	Hose clip \varnothing 14 - \varnothing 24	28 02 108	
18	Hose \varnothing 13 x 3,5 x 1015	40 02 029	per meter
19	Hose \varnothing 13 x 3,5 x 1215	40 02 029	per meter
20	Support cpl.	55 04 046	
21	Rinse connection cpl.	55 11 057	
22	Seal \varnothing 24 x \varnothing 19,5 x 1,5	27 09 010	
23	Shaped hose DN 13 x 4	40 03 053	
24	Water inlet set	55 31 007	New version
25	Seal \varnothing 28,5 x \varnothing 20,5 x 2,0	27 01 002	Old Version flat gasket
n.p.	o-ring	2707031	New version
n.p.	Thrust ring	62002943	New version
26	Water inlet set	55 31 007	
n.p.	Set tank inlet	61005339	New version
27	Hexagon nut M 6	21 01 204	
28	Backflow restrictor	35 01 193	
29	Boiler	55 12 033	
30	O-ring	27 07 015	
31	Heating element 5 kW 220/380 V	31 03 030	
n.p.	Heating element 5 kW 240/420 V	31 03 032	
32	Clamping plate	01 17 003	
33	Washer \varnothing 5,3	22 02 203	
n.p.	Heating element 5 kW 240/420 V	31 03 032	

GS 10/2

Nachspülung II
Rinsing II
Rinçage II

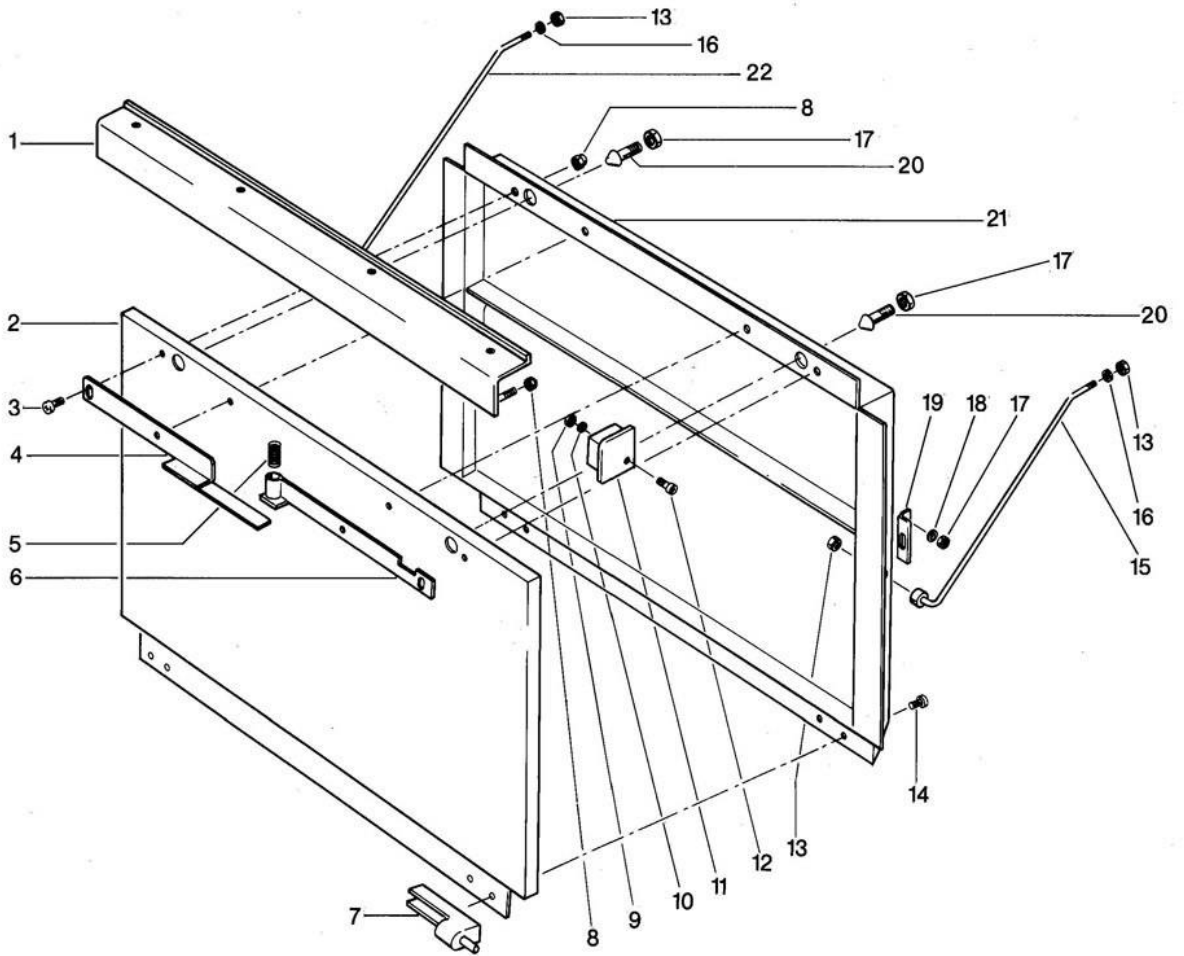
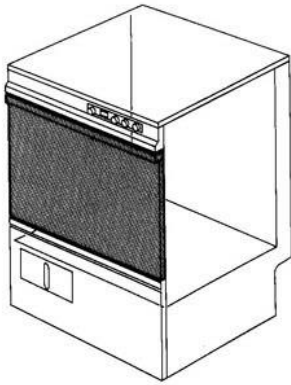


GS 10/2
Rinsing II

Pos.	Designation	Part no.	Notes
1	Rinse manifold	55 09 030	
2	Seal \varnothing 34 x \varnothing 27 x 2,0	27 09 025	
3	Locking nut 3/4" BSP	61002626	
4	Pipe clip	55 04 057	
5	Dome head nut M 4	21 10 302	
6	Cutting ring \varnothing 10	29 07 303	
7	Coupling nut 3/8" BSP	29 07 200	
8	Top rinse pipe	55 10 075	
9	Spray jet cap	65002765	13 x
10	Spray jet swirl	65002764	13 x
1	Hinged piece	55 10 008	
12	Bottom rinse pipe cpl.	55 10 076	
13	Threaded pin M 9 x 40	20 30 502	black
14	Revolving arm cpl.	55 10 078	
15	Revolving arm support	55 10 077	
16	Threaded pin M 11 x 1 x 8	29 10 239	
17	Revolving arm bush cpl.	55 10 078	
18	Rotating arm socket	35 01 161	
19	Revolving arm screw M 14 x 1 x 13	20 19 204	
20	Threaded pin M 11 x 14 x 14	29 10 240	with O-ring
21	Flat rinse jet	29 10 312	

GS 10/2

Türe
Door
Porte

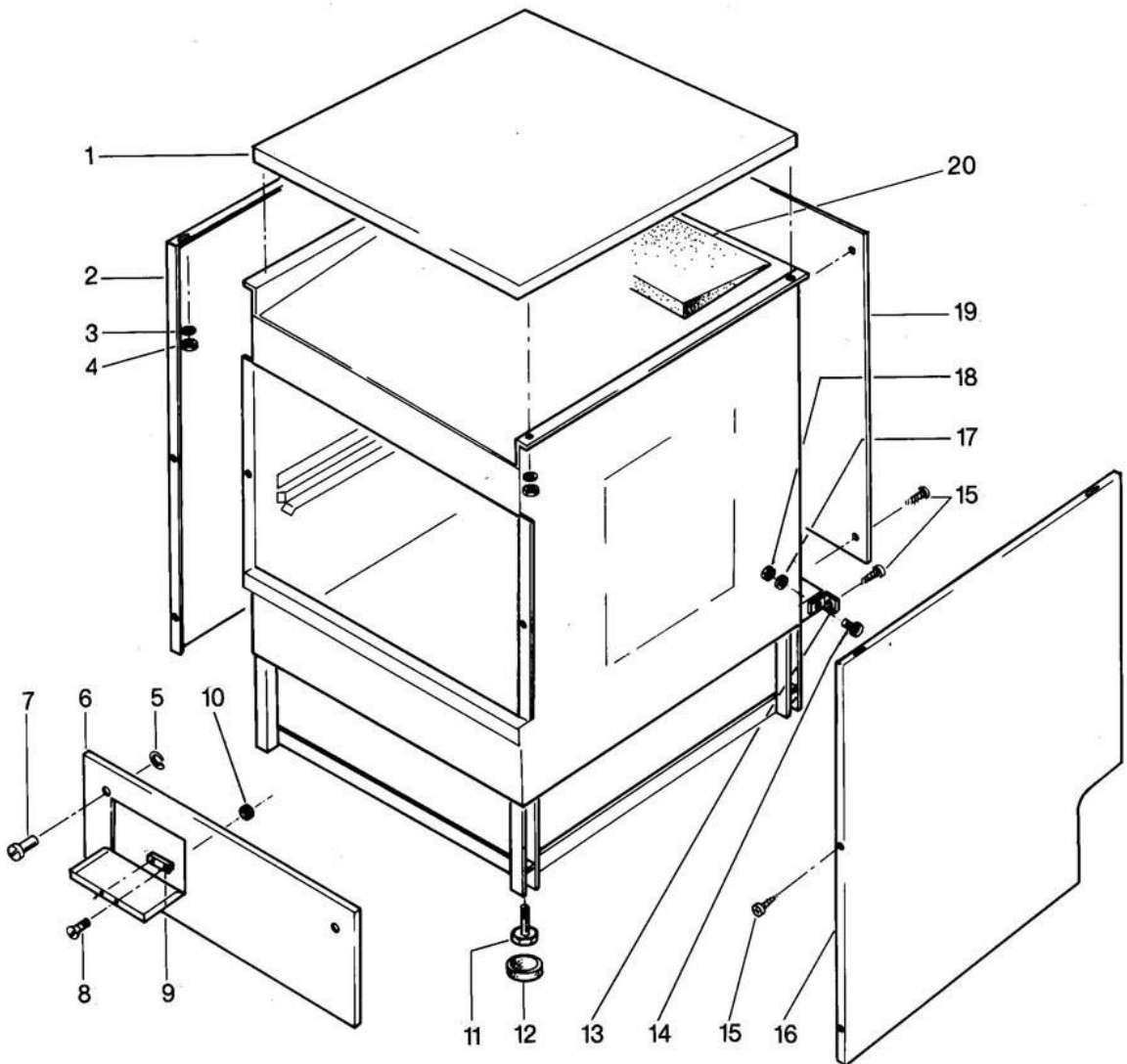
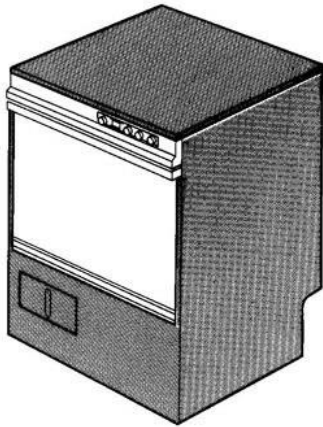


GS 10/2
Door

Pos.	Designation	Part no.	Notes
1	Door handle	55 15 101	
2	Door plate outside	55 15 098	
3	Screw for door lock M 4	20 19 308	
4	Locking angle left	55 15 100	
5	Retaining support	28 04 009	
6	Locking angle right	55 15 099	
7	Door hinge	35 01 151	
8	Dome head nut M 4	21 10 302	
9	Hexagon nut M 3	21 01 201	
10	Washer for M 3	22 08 501	
11	Grip corner right	35 01 170	
n.p.	Grip corner left	35 01 171	
12	Lens head countersunk screw M 3 x 5	20 12 300	
13	Hexagon nut M 6	21 05 304	self-securing
14	Lens head countersunk screw M 4 x 12	20 12 314	
15	Door stay right	55 15 096	
16	Washer for M 6	22 08 504	
17	Hexagon nut M 5	21 01 303	
18	Washer ø 5,3	22 02 203	
19	Sliding piece	35 01 172	
20	Door bolt	20 19 303	
n.p.	Washer ø 5,2	22 02 314	for pos. 20
n.p.	Pressure spring	28 04 013	
21	Door base frame	55 15 095	
22	Door stay left	55 15 097	
n.p.	Door cpl.	55 15 094	
n.p.	Silicone profile joint 560 mm	62001618	per metre as from 11/93
n.p.	Silicone glue	34 03 012	
n.p.	Door with hutch	80000452	Max. cage height 290mm
n.p.	Inst. Steam protection	5528116	

GS 10/2

Verkleidung
Sheathing
Habillage

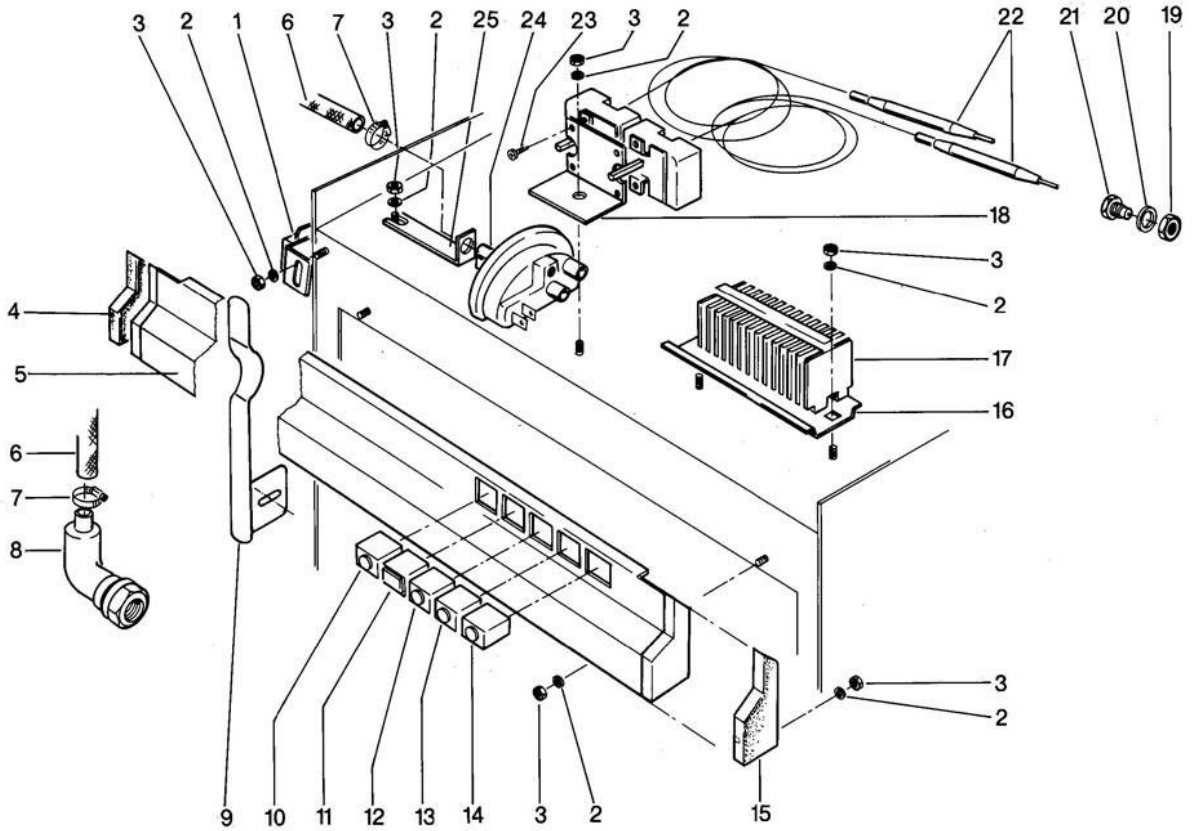
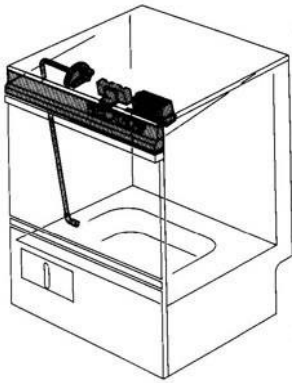


**GS 10/2
Panel**

Pos.	Designation	Part no.	Notes
1	Covering plate	55 03 072	
2	Lateral panel left	55 03 070	
3	Washer ø 4,3	22 02 202	
4	Hexagon nut M 4	21 05 201	
5	Annular spring	23 12 300	
6	Front panel	55 03 069	
7	Threaded cap	28 14 331	
8	Countersunk screw M 3 x 16	20 08 205	
9	Magnetic spring catch	28 05 044	
10	Hexagon nut M 3	21 01 201	
11	Hexagon screw M 10 x 60	20 01 360	
12	Protective cap	35 03 018	
13	Angle	55 02 019	
14	Lens cylinder screw M 5 x 8	20 10 221	
15	Cylinder screw B 3,9 x 16	20 20 300	
16	Lateral panel right	55 03 071	
17	Washer ø 5,3	22 02 203	
18	Hexagon nut M 5	21 01 303	
19	Rear panel short, 665 mm	55 03 120	
20	Angled insulation		No more available
n.p.	Rear panel long, 800 mm	55 03 118	
n.p.	Clamping rail	31 09 002	
n.p.	Surface strainer	60003950	Option
n.p.	Pump strainer	55 13 027	

GS 10/2

Elektroteile I Electrical parts I Matériel électrique I

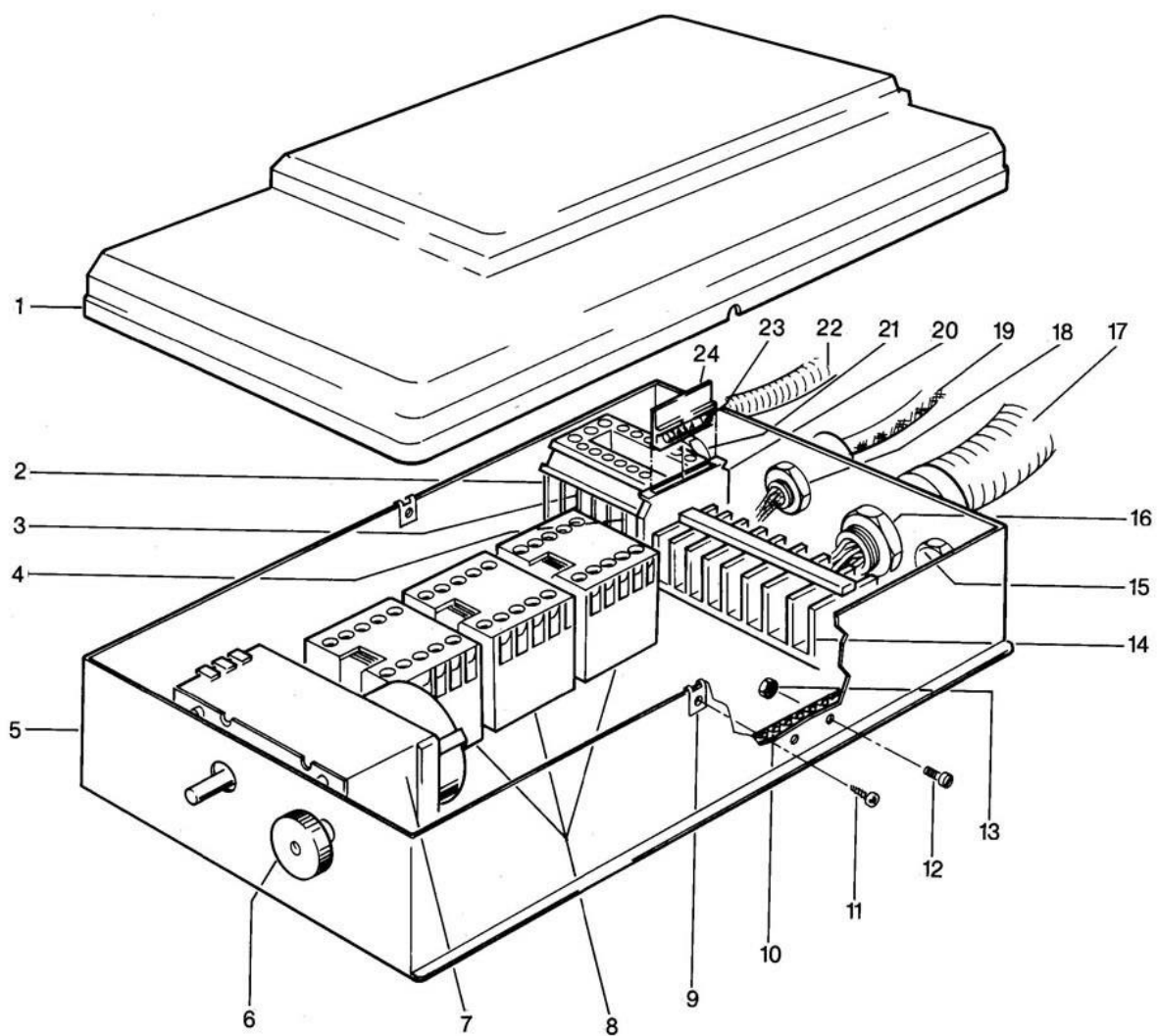
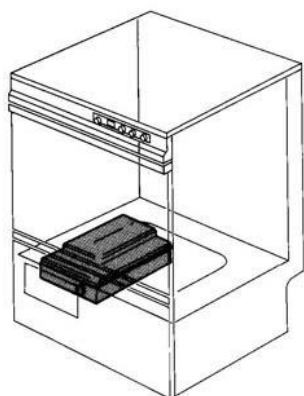


GS 10/2 Electrical parts I

Pos.	Designation	Part no.	Notes
1	Limit switch cpl.	55 19 007	
2	Washer \varnothing 4,3	22 02 202	
3	Hexagon nut M 4	21 01 202	
4	Screen corner left	35 01 167	
5	Screen cpl. f. square switches	55 03 087	w. screen corners without switches, until 8/90
5a	Screen cpl. for rectangular switches	55 03 134	w. screen corners without switches, as from 8/90
6	Hose \varnothing 5 x 3 x 1200 lg.	40 01 024	per metre
7	Wire hose clip	2802348	
8	Air chamber cpl.	55 04 030	
9	Switch spring	55 19 041	
10	Pressure switch green	31 24 185	
11	Lamp white 220 V	31 08 116	
12	Pressure key button orange	31 24 130	Rectangular switch since 09/90
13	Pressure switch white	31 24 128	
14	Pressure key button white	31 24 129	
10a	Pressure switch	3124089	
11a	Temperature control	3124090	
12a	Pressure key start	3124091	Quadratic switch till 08/90
13a	Pressure switch wash	3124092	
14a	Pressure key rinse	3124093	
n.p.	Bulb; 48V; 20MA	31 08 034	
15	Screen corner right	35 01 166	
16	Rail	55 19 067	
17	Terminal strip 13 sections	55 19 070	made of 31 09 025
18	Thermostat support	55 19 068	
19	Locking nut M 14 x 1	31 25 002	
20	Seal \varnothing 14,2 x \varnothing 19,9 x 2,0	27 09 036	
21	Gland for thermostat	31 25 001	
22	Thermostat 1750 lg.	31 25 013	for tank and boiler
23	Pan head screw M 4 x 8	20 10 309	
24	Level switch orange 100/60	31 26 020	
25	Supporting angle for level switch	55 19 069	
n.p.	Symbol plate for screen	28 03 155	
n.p.	Plate type strip GS 10/2 (rectangular switch)	28 03 223	for pos. 5 a
n.p.	Wire assortment (control panel)	60001724	
n.p.	Wire assortment (limit switch)	31 23 063	
n.p.	Band terminal (8-pin)	31 09 002	base frame
n.p.	Foil "Winterhalter" by quadratic switch	2803147	To pos. 5
n.p.	Foil "GS 10/2" by quadratic switch	2803146	To pos.5
n.p.	screen	81000048	to Rectangular switch

GS 10/2

Elektroteile II Electrical parts II Matériel électrique II



GS 10/2 Electrical parts II

Pos.	Designation	Part no.	Notes
1	Contacteur box cover	60001664	
2	Terminal block yellow/green	31 09 064	
3	Terminal block blue	31 09 050	
4	Terminal block grey	31 09 049	
5	Contacteur box	60001710	
6	Knurled nut	21 12 004	
7	Programme switch	31 05 100	
8	Contacteur	31 04 161	
9	Sheet-metal nut B 3,9	21 17 301	
10	Protecting wire terminal	31 09 094	
11	Lens head countersunk screw B 3,9 x 19	20 22 302	
12	Pan head screw M 4 x 12	20 10 312	
13	Hexagon nut M 4	21 01 202	
14	Terminal strip 13 sections	55 19 070	made of 31 09 025
15	Blind bush PG 16	31 10 025	
n.p.	Hexagon nut for PG 16	31 10 110	
16	Cable gland PG 21	31 10 070	
n.p.	Hexagon nut for PG 21	31 10 012	
17	Wiring loom I relaisbox	31 23 064	Pump + heating
18	Cable gland PG 11	31 10 044	
n.p.	Hexagon nut for PG 11	31 10 045	
19	Feed line	31 23 132	
20	Terminal block UK-SI	31 09 063	
21	Cable gland PG 16	31 10 049	
22	Wiring loom II control technique	31 23 065	For switch
23	Fuse 6,3 Amp.	31 11 043	
24	Fuse plug	31 09 072	
n.p.	Bottom part for fuse plug	31 09 063	
n.p.	RC-link 0,27 µF	61002141	w. plug-in bush + heat-shrinkable sleeve